

# home market **NOW**

W E E K L Y

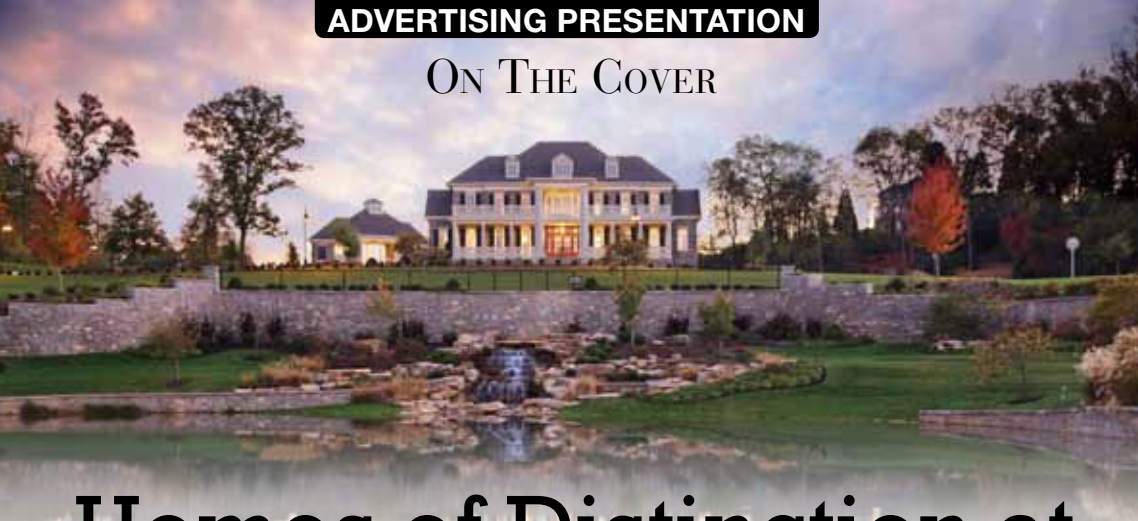


## Homes of Distinction at Bridgemore Tour

Showcasing custom-built homes in a setting of enhanced  
natural beauty | See feature inside

Inside: Knoxville Mortgage Guide Open House Directory and Map

ON THE COVER



# Homes of Distinction at Bridgemore Tour

Showcasing custom-built homes in a setting of enhanced natural beauty

By Chandra Harris-McCray  
Custom Publishing correspondent

*Before they settle into well-deserved luxury, three Bridgemore families are offering a rare glimpse into their furnished dream homes during this year's Homes of Distinction at Bridgemore Tour, with 100 percent of the proceeds benefitting STAR, the Shangri-La Therapeutic Academy of Riding.*

**W**ith this one-of-a-kind tour, Bridgemore not only makes an indelible first impression, the master-planned community continues to create lasting impressions with its home designs and architecture.

Even before you step inside the three extraordinary custom homes, the tour, which is \$10 and continues through Sept. 25, begins with the enhanced natural beauty that greets you at the entrance of Bridgemore. Along the wide boulevard, a series of



## Homes of Distinction at Bridgemore Tour

**When:** 10 a.m. to 5 p.m. Thursdays through Saturdays and noon to 5 p.m. on Sundays through Sept. 25

**Where:** Bridgemore subdivision off McFee Road, Farragut, 12950 Highwick Circle

**Cost:** \$10 admission tickets may be purchased at the clubhouse; 100 percent of the proceeds benefit STAR, Shangri-La Therapeutic Academy of Riding

**Other tour participants:** AVS Design Concepts, Bennett Galleries and Co., David's Abbey Carpet & Floors, Home Choice Windows & Doors, Volunteer Lawn Inc., 84 Lumber, Ladd's and Friedman's Appliances.

**More information:**  
[www.HomesOfDistinctionAtBridgemore.com](http://www.HomesOfDistinctionAtBridgemore.com)



waterfalls and reflecting ponds meander down a rolling hillside resplendent with native plants and plush grasses. The journey is further refined by stately stone walls with elegant wrought-iron touches and bridges that beckon for moments often captured in one's heart to be framed within a photograph as a keepsake.

"Bridgemore is making family history every day," says co-developer Jerry Whitehead. "It is truly where lasting first impressions are being made today to be cherished tomorrow."

Surrounded by magnificent mountain views and rolling hills, Bridgemore is situated on the history-steeped Old McFee Farm, located off McFee Road at one of the highest points in West Knoxville. Just minutes away from the Tennessee River and Fort Loudoun Lake, Bridgemore sits on close to 340 acres across from Fox Den Country Club and borders Willow Creek Golf Club. Further accentuated by a Classic Revival clubhouse along with never-ending walking trails and sidewalks, this unique community stands out from the rest with 135 acres of parks and green space.

Just as the three custom homes featured on the tour reflect, every home in Bridgemore is designed and constructed by the finest land planners, architects, designers and builders. The Homes of Distinction at Bridgemore Tour, which runs 10

a.m. to 5 p.m. Thursdays through Saturdays and from noon to 5 p.m. on Sundays, showcases custom homes constructed by Joseph A. Houck Construction Co., WoodPointe Construction & Architecture and BrookWood Construction & Engineers. Ranging from 5,000 square feet up to 10,000, the luxury homes feature the latest and greatest in homebuilding and design.

With about 59 homesites remaining in Phase I, and 240-plus homesites available in future phases, a home could be situated on a half-acre lot with 30 acres of open parkland behind it, Whitehead points out. "There are no bad lots, just a lot of wonderful choices to fulfill your needs and preferences. The homes are designed for the 'now' time of your life," he says, noting that the community also delivers extraordinary value to buyers.

"Whenever you look at purchasing in a neighborhood, look at the added value of that property," he says. "For example, in Bridgemore, we have a tremendous investment in exquisite landscaping, a very high-quality infrastructure and acres of well-planned open space. Added to these amenities is a well-appointed clubhouse. All of these features, along with our great location, will add long-term value to your property."

Whitehead adds that low interest rates and special lot pricing opportunities available during the tour



## A Closer Look



**Location:** Farragut

**Developer:** PlaceMakers Partnership II

**Description:** Estate lots along a sweeping boulevard and hillside homesites with 360-degree views of the Smokies and surrounding countryside

**Type of homes:** Custom single-family homes

**Pricing:** Special homesite pricing available during the Homes of Distinction at Bridgemore Tour

**Amenities:** More than 130 acres of parks and green space, ponds, sidewalks, walking trails, clubhouse, competition-style swimming pool, tennis courts and playground

**School district:** Farragut schools

**Utilities:** Lenoir City Utilities Board (electricity); Knoxville Utilities Board (gas); First Utility District (water and

sewer); TDS Telecom (phone), TDS (cable)

**Distances:** Interstate 40, five miles; Mercy Medical Center West and Turkey Creek shopping area, 8 miles; McGhee Tyson Airport, 20 miles.

**Directions:** Take Interstate 40 to Exit 373. Go south on Campbell Station Road and then west on Kingston Pike. Go 2.4 miles and turn left onto Old Stage Road. Turn left onto McFee Road; the Bridgemore entrance is on the right just after the roundabout.

**Listing agents and contacts:** Jerry Whitehead and Susie Lash, owners/agents of Gables & Gates, Realtors along with Bridgemore specialists Janet DeBusk Hensley, Sherry Shope and Troy Stavros can be reached at 865-777-9191 or visit [www.BridgemoreLife.com](http://www.BridgemoreLife.com) or [www.GablesandGates.com](http://www.GablesandGates.com).

create the best possible time to build or buy.

No two home designs in Bridgemore are alike, he says, although all the floor plans combine the influences of classic and traditional styles. "A home today is more than a residence," he says. "It is a thoughtful balance between nature and man ... time and tradition. These designs blend feelings of unpredictability with expansive quality."

Whitehead says the homes are designed with inviting entryways and distinct materials. "The kitchens and other living spaces are open, flowing and specifically designed to encourage causal or formal entertaining. Just as the illuminated front porches welcome friends and family, the indoor/outdoor spaces invite them to stay and enjoy pleasant conversation," he says

"Bridgemore is being built for generations to enjoy."

Whitehead and his wife, Susie Lash, own the real estate firm Gables & Gates, Realtors, which is the exclusive listing agency for Bridgemore.